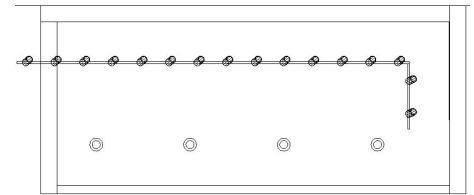
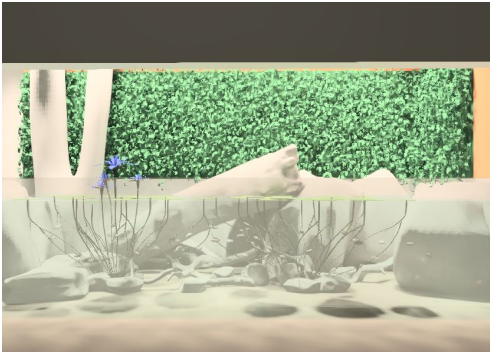
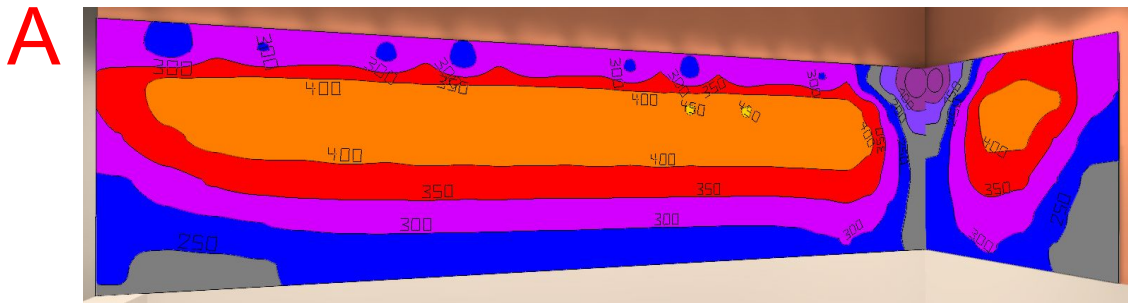


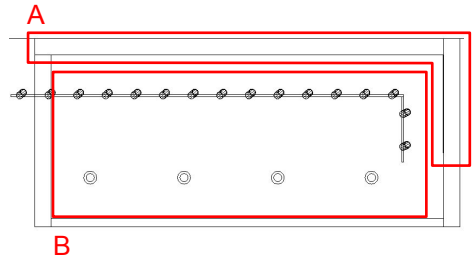
Georgia Aquarium Wetlands



Georgia Aquarium Wetlands [Result]

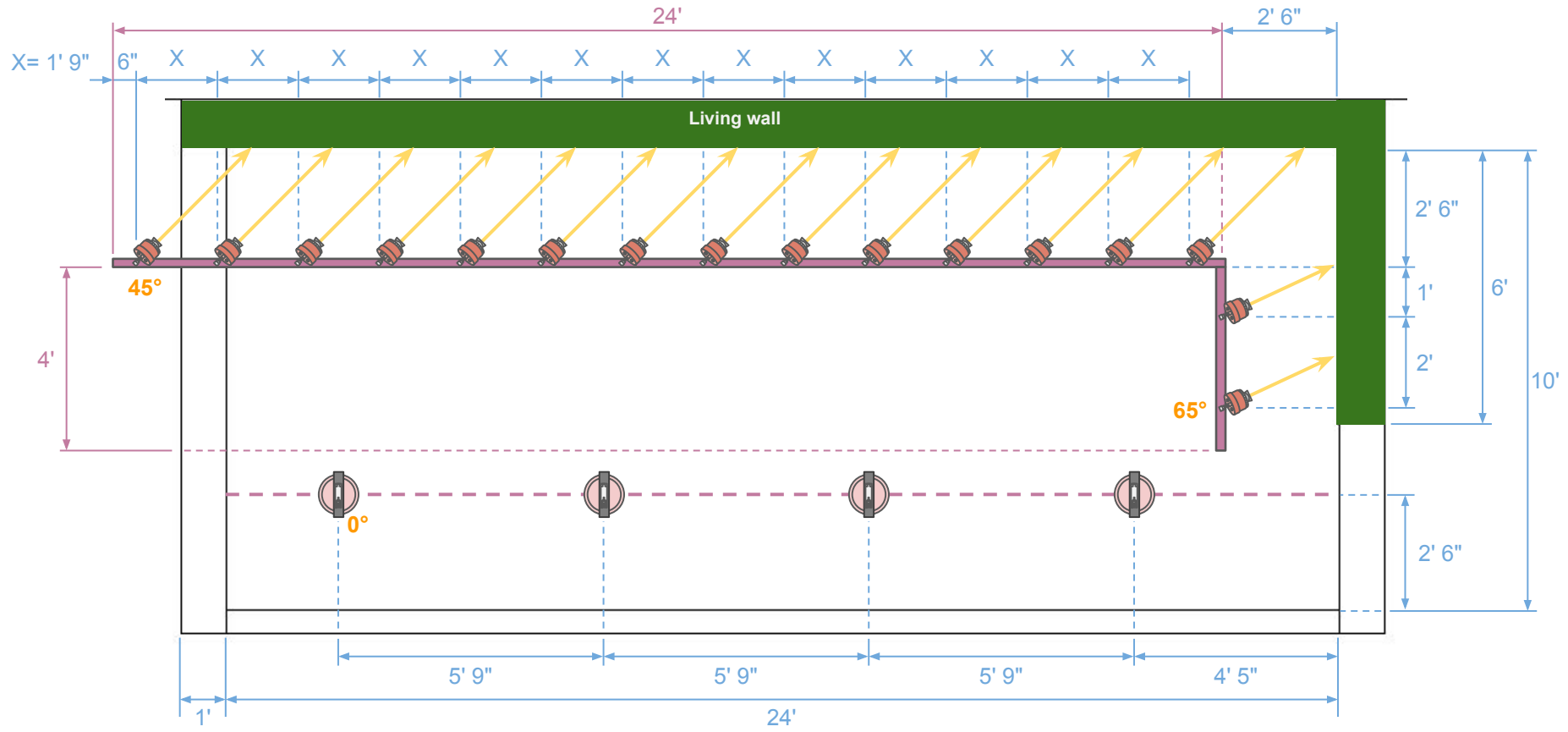


A-Living Wall Dim. - 25' L x 6' W x 6' H
B-Tank Dim. - 24' L x 10' W x 4' 6" H



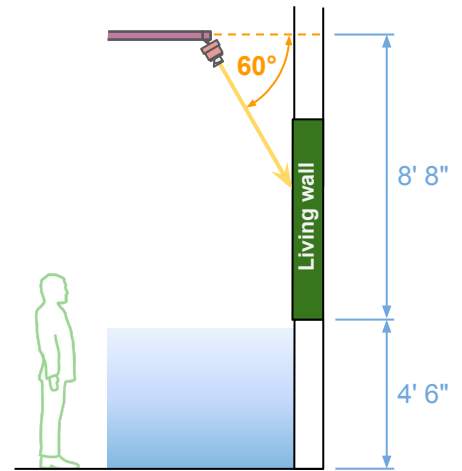
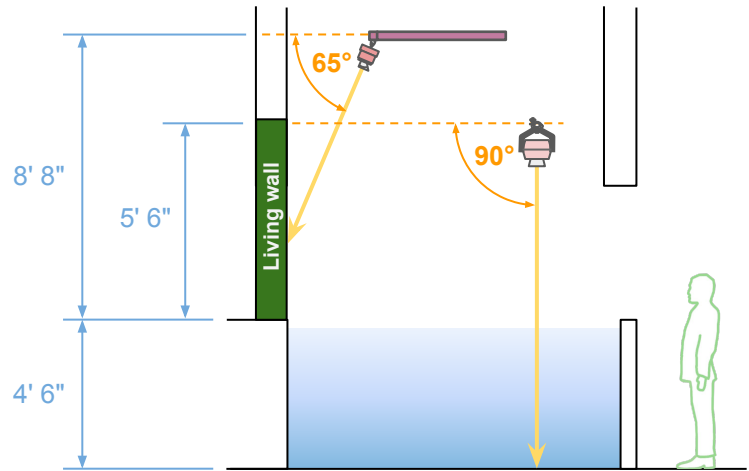
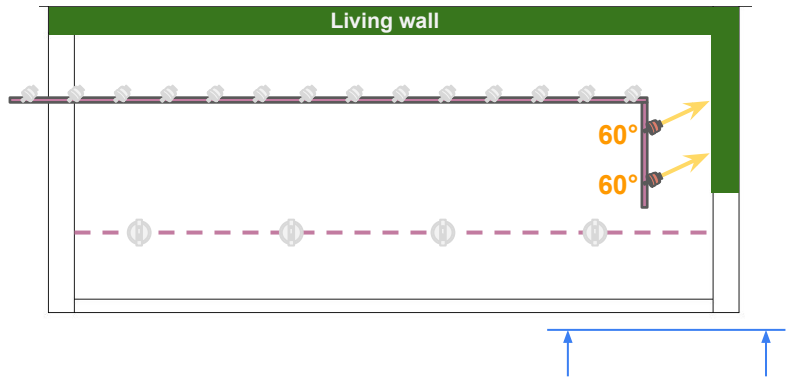
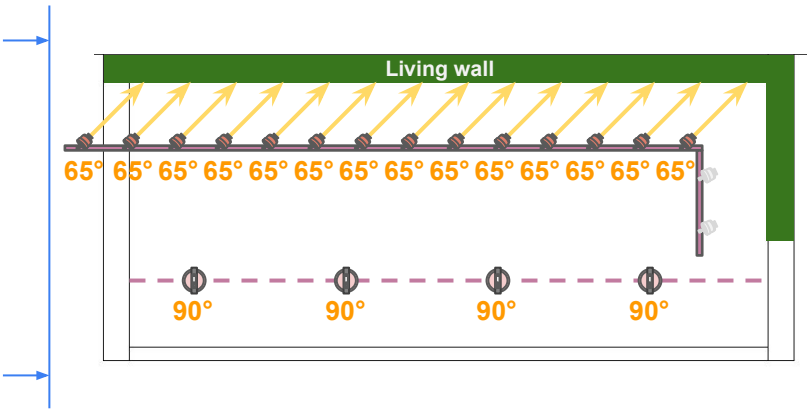
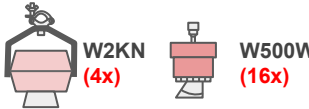
Georgia Aquarium Wetlands Lighting Layout, Top View

Total Fixture-  W2KN (4x)  W500W (16x)



Georgia Aquarium Wetlands Lighting Layout, Top View

Total Fixture-



Georgia Aquarium Wetlands BOM

| Part No. | Description | QTY |
|---------------------------|--|-----|
| KSW500W-AMZ-WH-TOX-PSX-US | W500W AMZ, 175W, Wall Wash, White, 2 Circuit, DMX Control | 16 |
| KSW2KN-AMZ-WH-CLP-PSX-US | W2KN AMZ, 720W, 30D, White, Clamp, DMX Control | 4 |
| KSL-9000-UL4/W-ST2-120 | 4ft, 120V, 2 Circuit w/ DataBus, White | 1 |
| KSL-9000-UL8/W-ST2-120 | 8ft, 120V, 2 Circuit w/ DataBus, White | 3 |
| KSL-9012/W-2C | L-Coupler w/ DataBus outside, White | 1 |
| KSL-9010/W-2C | Straight Coupler w/ DataBus & Power Feed, White | 2 |
| KSL-9001/W-2C | End Feed, 2 Circuit w/ DataBus, Right, White | 1 |
| KSL-9002/W-2C | End Feed, 2 Circuit w/ DataBus, Left, White | 1 |